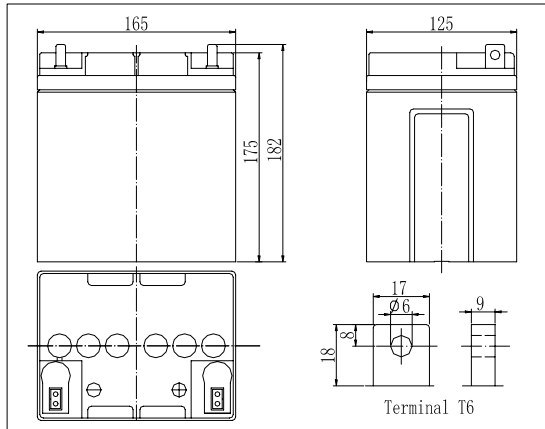


**Dimensions**

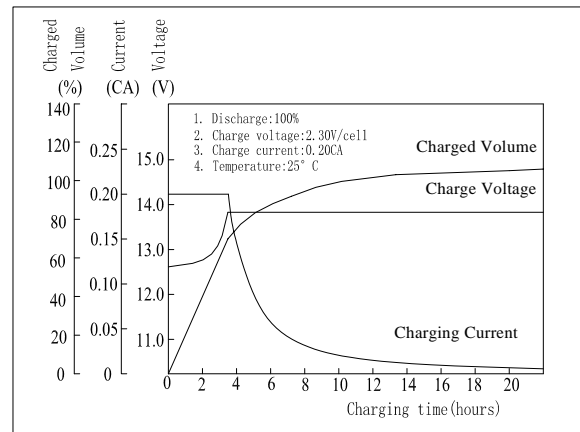


**Specifications**

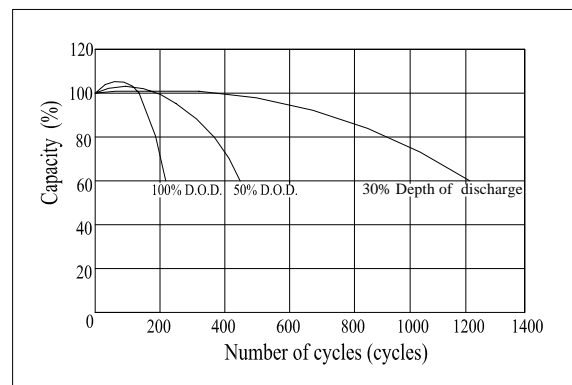
Nominal Voltage	12 V	
Capacity(20HR, 25°C)	26Ah	
Dimension	Length	165mm (6.50inch)
	Width	125mm (4.92inch)
	Height	175mm (6.89inch)
	Total Height	182mm (7.17inch)
Approx. Weight	8.50 kg (18.7lbs)	
Internal resistance (Fully charged, 25°C)	Approx. 12mΩ	
Capacity affected by temperature (20HR)	40°C	102%
	25°C	100%
	0°C	85%
	-15°C	65%
Self-discharge (25°C)	3 month	Remaining Capacity: 91%
	6 month	Remaining Capacity: 82%
	12 month	Remaining Capacity: 65%
Nominal operating temperature	25°C ± 3°C (77°F ± 5°F)	
Operating temperature range	-15°C ~ 50°C (5°F ~ 122°F)	
Float charging voltage(25°C)	13.38 to 13.80V	
Cyclic charging voltage(25°C)	14.40 to 15.00V	
Maximum charging current	9.6A	
Terminal material	Lead	
Maximum discharge current	390A(5 sec.)	

- ◆ Absorbent glass mat technology;
- ◆ Recognized by UL & CE;
- ◆ Flame retardant ABS container ( UL94V-0 / 94 V-2 )

**Charging Characteristics(25°C)**



**Cycle Life(25°C)**



Note: Floating life designed for 5 years at 25°C.

**Constant Current Discharge Characteristics (A, 25°C)**

F.V/TIME	5min	10min	15min	30min	60min	2h	3h	5h	8h	10h	20h
9.60V	94.0	63.5	47.0	28.0	15.8	8.53	6.39	4.26	2.68	2.46	1.30
10.2V	89.3	60.3	45.1	26.9	15.2	8.40	6.30	4.20	2.66	2.43	1.30
10.8V	83.9	56.7	42.9	25.5	14.4	8.23	6.17	4.12	2.64	2.37	1.25

**Constant Power Discharge Characteristics (Watt, 25°C)**

F.V/TIME	5min	10min	15min	30min	60min	2h	3h	5h	8h	10h	20h
9.60V	1049	716	536	321	183	99.8	76.0	50.9	32.2	29.5	15.6
10.2V	997	680	514	308	176	98.3	74.8	50.1	31.9	29.1	15.6
10.8V	937	640	489	293	167	96.3	73.3	49.1	31.7	28.4	15.0