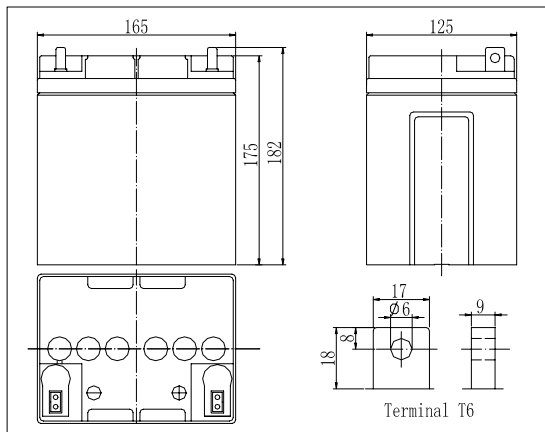


Dimensions

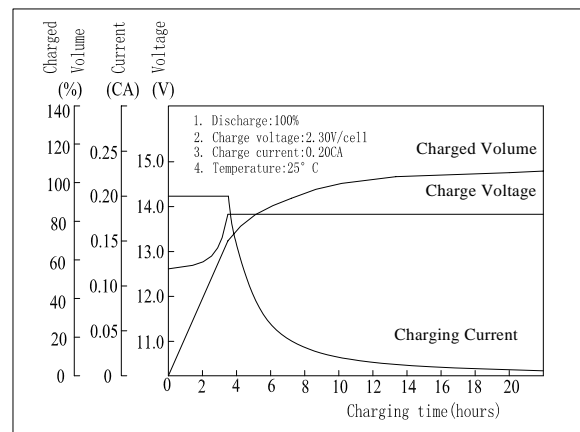


Specifications

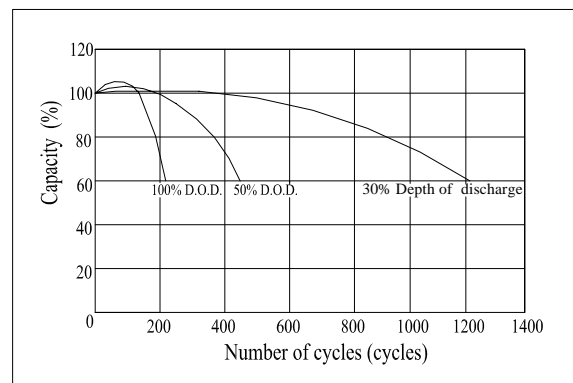
Nominal Voltage	12 V	
Capacity(20HR, 25°C)	28Ah	
Dimension	Length	165mm (6.50inch)
	Width	125mm (4.92inch)
	Height	175mm (6.89inch)
	Total Height	182mm (7.17inch)
Approx. Weight	9.95kg (21.9lbs)	
Internal resistance (Fully charged, 25°C)	Approx. 11mΩ	
Capacity affected by temperature (20HR)	40°C	102%
	25°C	100%
	0°C	85%
	-15°C	65%
Self-discharge (25°C)	3 month	Remaining Capacity: 91%
	6 month	Remaining Capacity: 82%
	12 month	Remaining Capacity: 65%
Nominal operating temperature	25°C ± 3°C (77°F ± 5°F)	
Operating temperature range	-15°C ~ 50°C (5°F ~ 122°F)	
Float charging voltage(25°C)	13.38 to 13.80V	
Cyclic charging voltage(25°C)	14.40 to 15.00V	
Maximum charging current	11.2A	
Terminal material	Lead	
Maximum discharge current	420A(5 sec.)	

- ◆ Absorbent glass mat technology;
- ◆ Recognized by UL & CE;
- ◆ Flame retardant ABS container (UL94V-0 / 94 V-2)

Charging Characteristics(25°C)



Cycle Life(25°C)



Note: Floating life designed for 5 years at 25°C.

Constant Current Discharge Characteristics (A, 25°C)

F.V/TIME	5min	10min	15min	30min	60min	2h	3h	5h	8h	10h	20h
9.60V	112	70.0	52.0	31.0	19.5	9.95	7.21	4.92	3.13	2.74	1.42
10.2V	106	66.5	49.9	29.8	18.7	9.80	7.10	4.85	3.10	2.72	1.41
10.8V	100	62.5	47.4	28.3	17.8	9.60	6.96	4.75	3.08	2.70	1.40

Constant Power Discharge Characteristics (Watt, 25°C)

F.V/TIME	5min	10min	15min	30min	60min	2h	3h	5h	8h	10h	20h
9.60V	1250	790	593	355	226	116	85.6	58.8	37.5	32.9	17.1
10.2V	1187	750	569	341	217	115	84.3	57.9	37.2	32.6	16.9
10.8V	1116	705	541	324	206	112	82.7	56.8	37.0	32.6	16.8