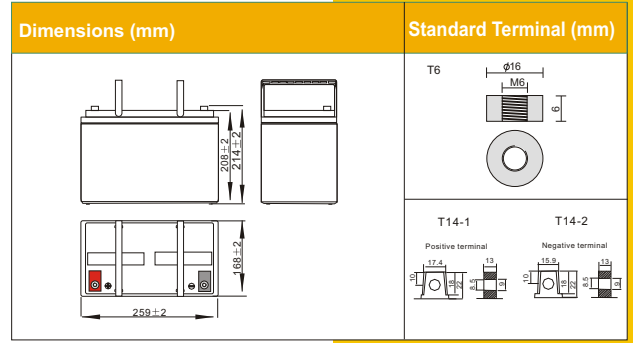
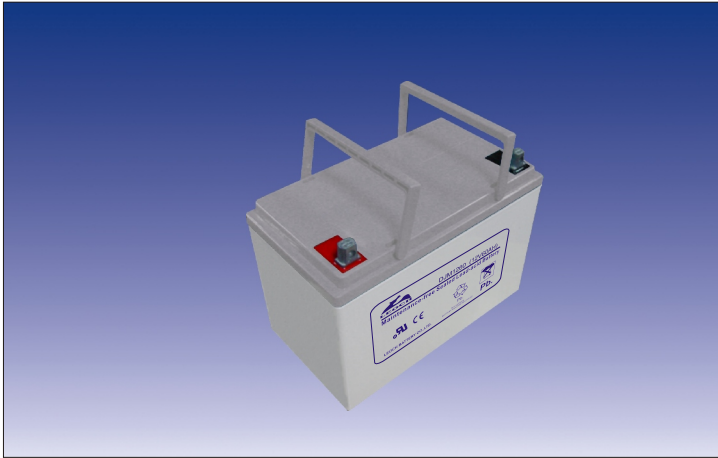
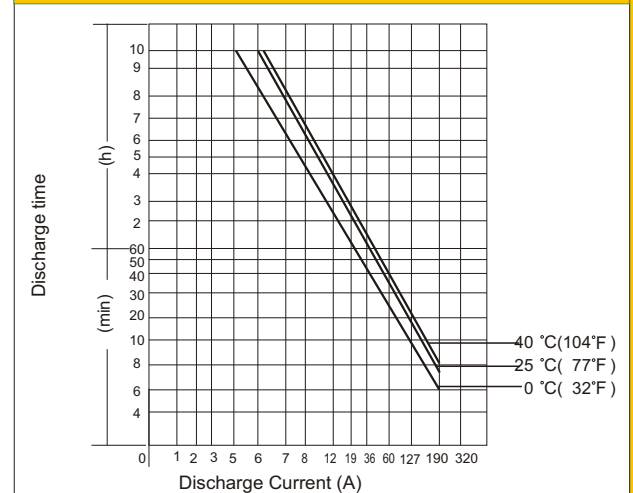




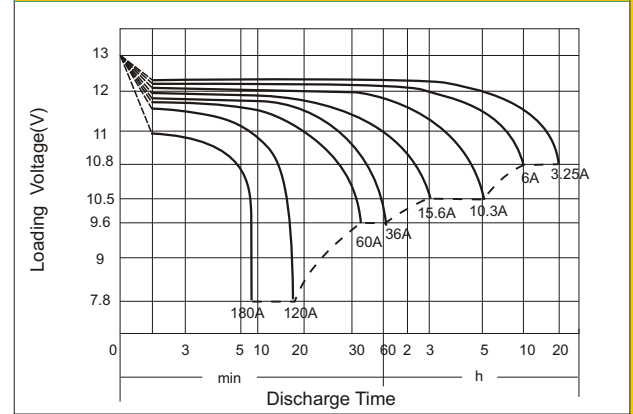
DJM1260(12V60AH)



Discharging Current & Discharge Duration Time



Discharge Characteristics (25°C, 77°F)



| PHYSICAL SPECIFICATION | | |
|-------------------------|---------------------------|-------------------------|
| Nominal Voltage | | 12V |
| Nominal Capacity (10HR) | | 60AH |
| Dimension | Length | 260±2mm (10.24 inches) |
| | Width | 168±2mm (6.61 inches) |
| | Container Height | 210±2mm (8.27 inches) |
| | Total Height (with Cover) | 216±2mm (8.51 inches) |
| Weight | | Approx 22.8kg (50.3lbs) |
| Standard Terminal | | T6/T14 |

| ELECTRICAL SPECIFICATION | | | | | |
|----------------------------------|--|---------|------------------|---------|--|
| Rated Capacity | 20 hour rate (3.25A) | 65.0 AH | Constant-Voltage | Cycle | Initial Charging Current less than 18A. Voltage 14.4V~15.0V at 25°C (77°F) Temp. Coefficient -30mV/C |
| | 10 hour rate (6.0A) | 60.0 AH | | | |
| | 5 hour rate (10.3A) | 51.5 AH | | | |
| | 3 hour rate (15.6A) | 46.8 AH | | | |
| | 1 hour rate (36A) | 36.0 AH | | | |
| Capacity affected by Temperature | 40°C (104°F) | 103% | Charge | Standby | No limit on Initial Charging Current Voltage 13.5V~13.8V at 25°C (77°F) Temp. Coefficient -20mV/C |
| | 25°C (77°F) | 100% | | | |
| | 0°C (32°F) | 86% | | | |
| Internal Resistance | Fully charged battery (25°C, 77°F) 7.4mΩ | | | | |

| Constant Current (Amp) and Constant Power (Watt/Cell) Discharge Table | | | | | | | Discharge Time (Minute) to final voltage / cell | | | | | |
|---|----|-----|------|------|------|------|---|------|------|------|------|------|
| Time | 10 | 20 | 30 | 60 | 120 | 180 | 240 | 300 | 360 | 480 | 600 | |
| 1.80V | A | 107 | 70.4 | 57.3 | 33.8 | 19.6 | 14.8 | 11.7 | 10.1 | 8.9 | 7.1 | 6.0 |
| 25°C | W | 195 | 130 | 108 | 64.9 | 37.9 | 28.7 | 22.8 | 19.6 | 17.3 | 14.2 | 12.0 |
| 1.75V | A | 117 | 75.6 | 59.5 | 35.3 | 20.4 | 15.6 | 12.0 | 10.3 | 9.1 | 7.5 | 6.7 |
| 25°C | W | 212 | 139 | 110 | 67.5 | 39.2 | 31.1 | 23.3 | 20.6 | 17.8 | 14.7 | 13.0 |
| 1.60V | A | 150 | 90.0 | 69.0 | 39.0 | 22.5 | 17.2 | 13.4 | 11.4 | 9.7 | 7.8 | 6.9 |
| 25°C | W | 255 | 160 | 130 | 72.8 | 43.0 | 33.1 | 25.6 | 22.0 | 18.8 | 15.2 | 13.2 |
| 1.80V | A | 91 | 60.0 | 48.8 | 28.8 | 16.7 | 12.6 | 10.0 | 8.6 | 7.5 | 6.1 | 5.5 |
| 5°C | W | 166 | 111 | 92.1 | 55.3 | 32.3 | 24.4 | 19.4 | 16.7 | 14.8 | 12.1 | 10.6 |
| 1.75V | A | 100 | 64.4 | 50.7 | 30.1 | 17.4 | 13.3 | 10.2 | 8.8 | 7.8 | 6.4 | 5.9 |
| 5°C | W | 181 | 118 | 93.9 | 57.5 | 33.4 | 26.5 | 19.8 | 17.5 | 15.2 | 12.5 | 11.5 |
| 1.60V | A | 128 | 76.7 | 58.8 | 33.2 | 19.2 | 14.7 | 11.4 | 9.7 | 8.3 | 6.6 | 6.1 |
| 5°C | W | 217 | 137 | 111 | 62.0 | 36.6 | 28.2 | 21.8 | 18.8 | 16.0 | 12.9 | 11.6 |